

## *How to change the Centri-Clean's Electric Motor.*

### **Step 1**



Remove the 3 fixation screws from the superior lid.

### **Step 2**



Remove the Centri-Clean's lid.

### **Step 3**



Remove the lid's gear.

## Step 4



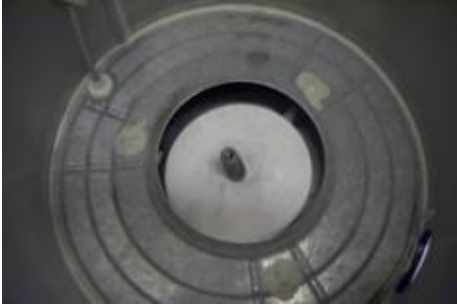
Loose the fixation screws from the stainless steel drum. Use an appropriate screwdriver.

## Step 5



Put a steel shaft, smaller than the central hole, inside of the motor's axel and with a hammer beat firmly in order to unfasten the stainless steel drum and the motor's axel. Make sure that the bottom of the Centri-Clean is touching a soft surface, because by doing this procedure the motor is likely to fall down, and the soft surface will protect it against eventual damages.

### Step 6



Disassembled metal base, without the stainless steel drum.

### Step 7



Disassembled stainless steel drum.

### Step 8



Put the Centri-Clean, with the superior lid facing down, on a soft surface. Be careful to not damage the finishing of the superior and lateral parts.

### Step 9



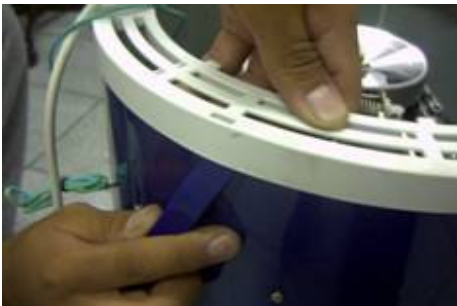
Remove the fixation screw from the inferior lid, and remove the lid.

### Step 10



Remove the fixation screw from the flexible cable and loose it with the plastic white piece, which holds the cable.

### Step 11



Use a plastic toll, to loose the base of the Centri-Clean. Be careful to not scratch the painting.

### Step 12



Carefully remove the Centri-Clean Base.

### Step 13



Cut the plastic cramp that holds the cable.

### Step 14



Remove the fixation screw of the electric ground cable (it depends of the country).

### Step 15



Push the brake cable support back and forth, pressing the spring and forcing the white piece until disassembling it.

### Step 16



Remove the white turn-on/turn-off switcher removing the fixation screw and twist the screwdriver clockwise.

### Step 17



### Step 18



Remove the fixation screws from the rubber chocks.

### Step 21



Remove the motor.

To re-assemble the motor in the metal base of the Centri-Clean, follow these steps backwards (**from the Step 21 to the first**).

