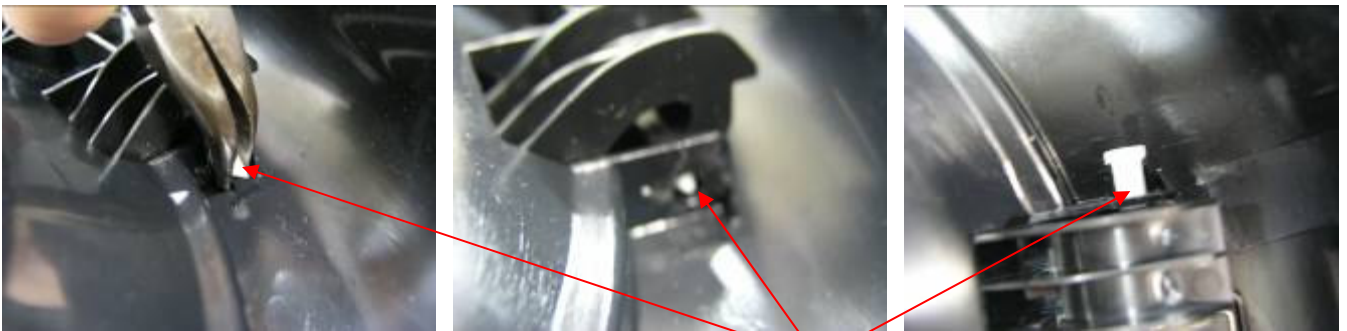


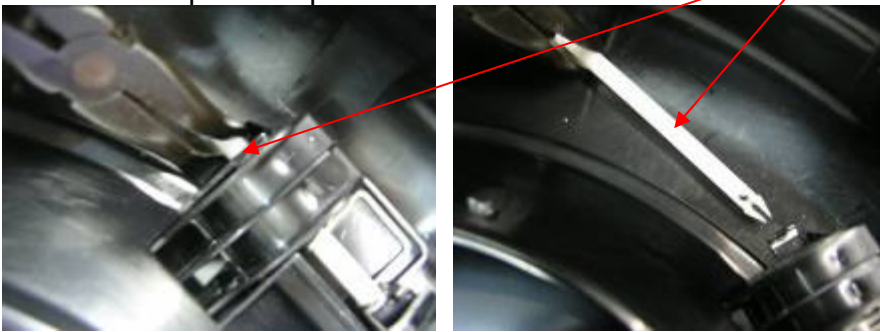
1. Remove the upper lid of the Centri Clean using a phillips screwdriver.
2. Once removed, hold the lid upside down. Use pliers to squeeze the white plastic locking device of the lid.



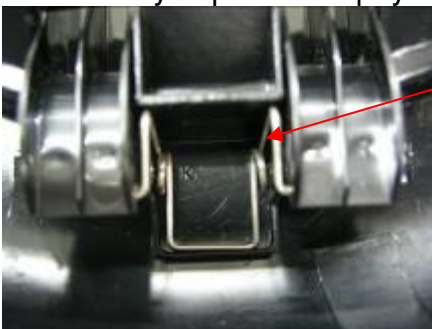
While squeezing the white locking device try to push it through in order to remove it.



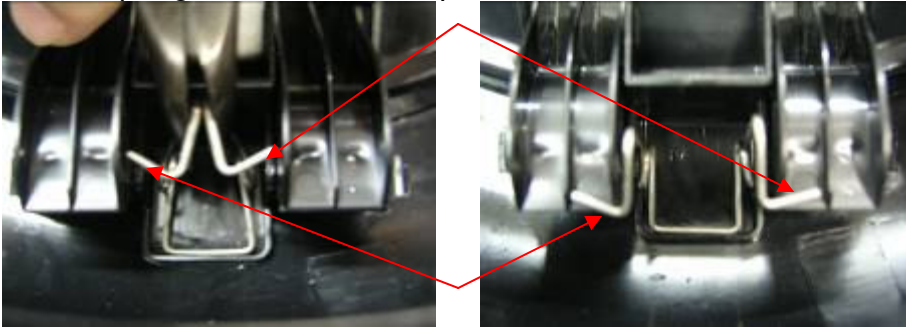
Now use the pliers to pull it out from the other side.



3. It is very important to pay attention on the position of the metal spring of the lid.



4. Use pliers to loose the metal spring. In order to do so, place the pliers over both sides of the spring, as shown in the picture below.



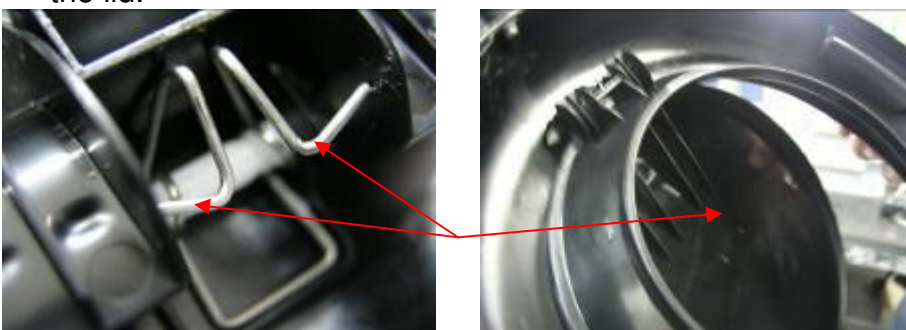
5. Once the metal spring is removed, remove the lid as shown in the pictures bellow.



6. To place the new lid, repeat the **step 5** (above). Now place the metal spring to its original position.



7. Now you will have to place the metal spring inside the curved part of the lid; squeeze both sides of the spring and then open the lid and the spring should fit inside the curved part of the lid.



REMARK: when proceeding with the step above, you can use pliers to assist fitting the spring inside. Open the lid slowly so you can see it fitting inside the curved part of the lid.