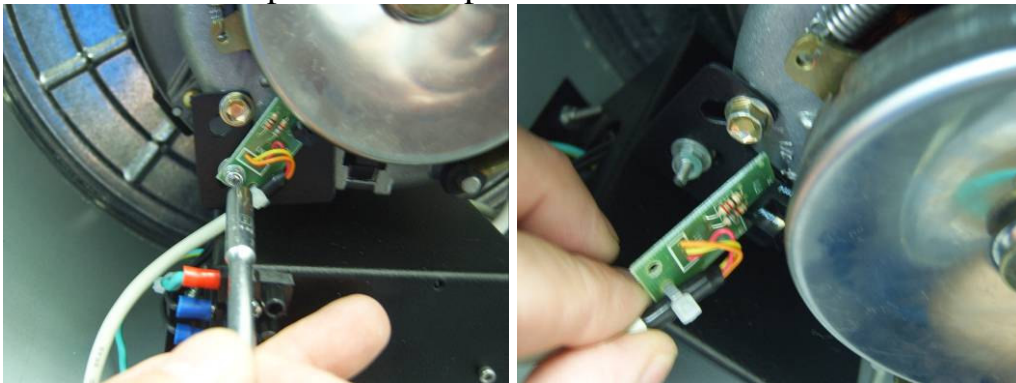


Replacement of the power source and controller of the Centri Clean Electronic.

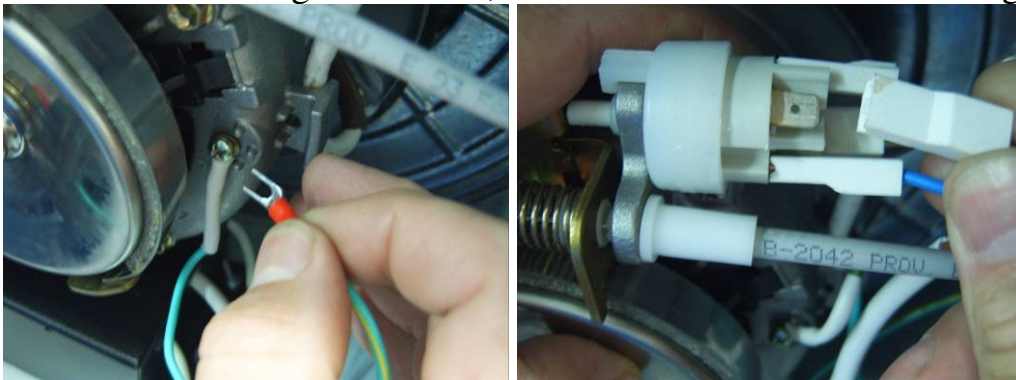
1 – Remove the base and disconnect the power cable.



2 – Remove the optic sensor's plate and handle it with care.



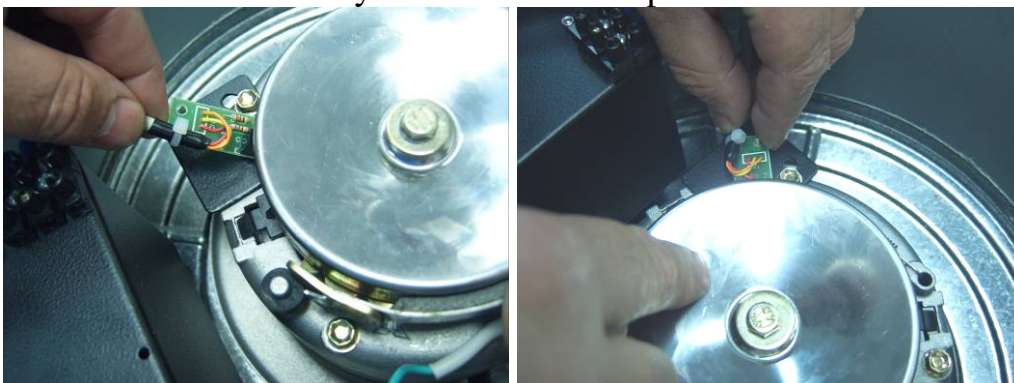
3 – Disconnect the ground cable; remove the terminals from the engine.



4 – Remove the power source, exchange it for the new one, and fix it the same way.



5 – Pay attention to place the optic sensor, place the machine upside down, fit the sensor in a diagonal line using a drilling of the disc as an aid and screw it just a little with the machine's lid closed; switch on the pin and turn the disc with your hand to confirm that it is not touching the sensor and screw it as soon as you find its correct position..



For the rest of the building process, follow the instructions backwards. It is very important that you assure yourself that the disc does not touch the optic sensor.

Obs.: The power sources are keyed to 220V.