

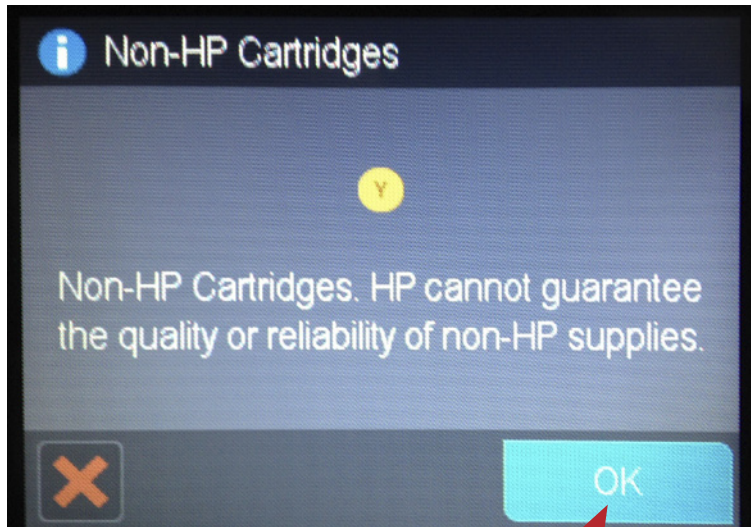


# HP 950XL/951XL & 932XL / 933XL TIPS

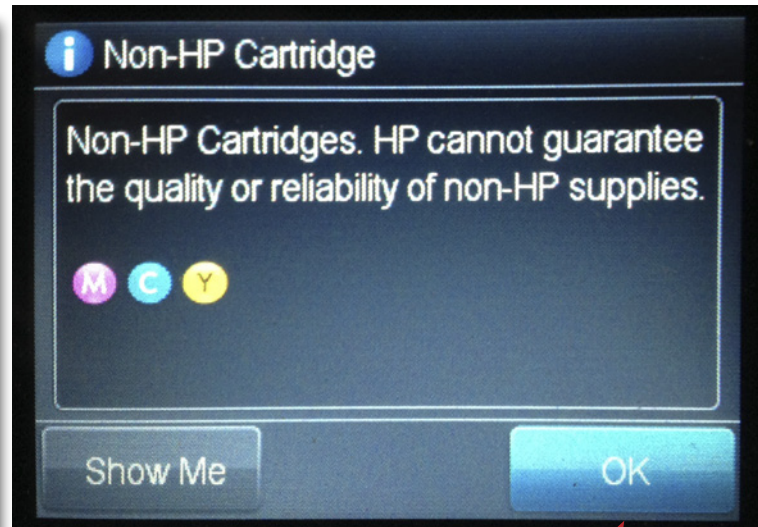
CWS H 3

## SPLASH SCREENS YOU MIGHT SEE WHEN INSTALLING

After installing a CW Brand HP932XL, 933XL, 950XL or 951XL inkjet cartridge you may see a screen as shown below. If the screen appears just select 'OK'



Press the OK button to continue printing



Press the OK button to continue printing

### TECH NOTE: IF PREVIOUSLY OTHER BRAND COMPATIBLES HAVE BEEN USED IN THE PRINTER

CW Brand 932XL, 933XL, 950XL, 951XL cartridges contain Pigment based inks similar to the original HP Brand. These inks are water proof, light fast, resistant and Archival. Many other brands use DYE based inks instead. These Dye inks do not match the OEM specifications and may cause printing issues.

When swapping back to the correct ink, the printer may need several head cleans.

We have also seen dye ink "pooling" at the base of the print head. This ink will cause printing issues and must be removed.



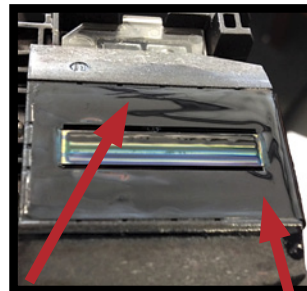
Open cover and let head move to change position.



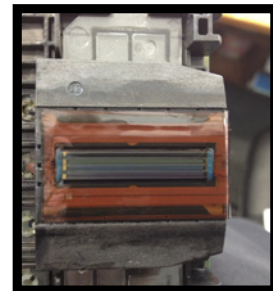
Lift lever on right side to unlock head assembly.



Lift out head assembly



Pooled ink on and around print head on underside of assembly



Wipe off all ink and reinstall head assembly.

If you experience printing problems don't remove any cartridges and potentially waste time on an unnecessary trip to the store. Call the store where you purchased the cartridges from.

Remember all Cartridge World cartridges come with a full satisfaction guarantee.