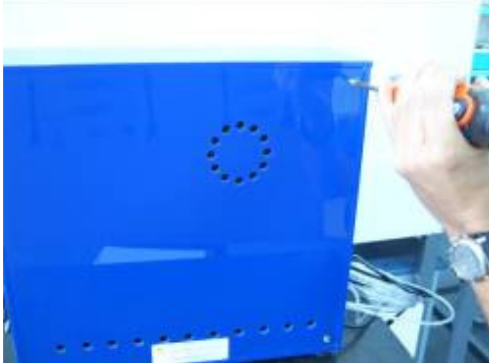
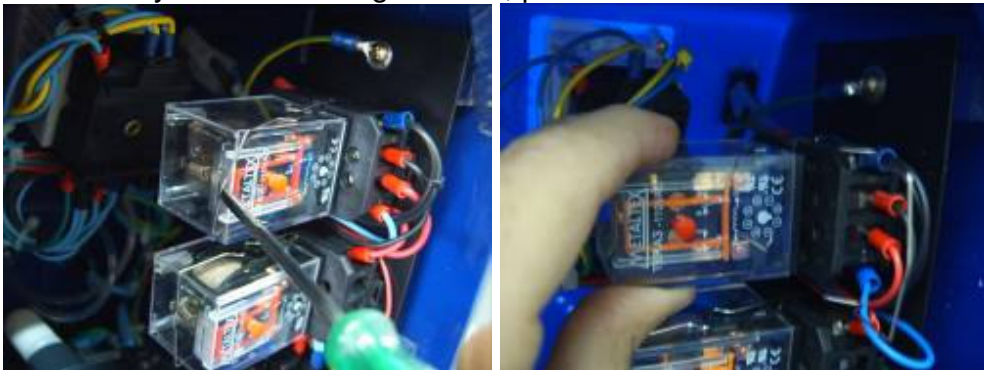


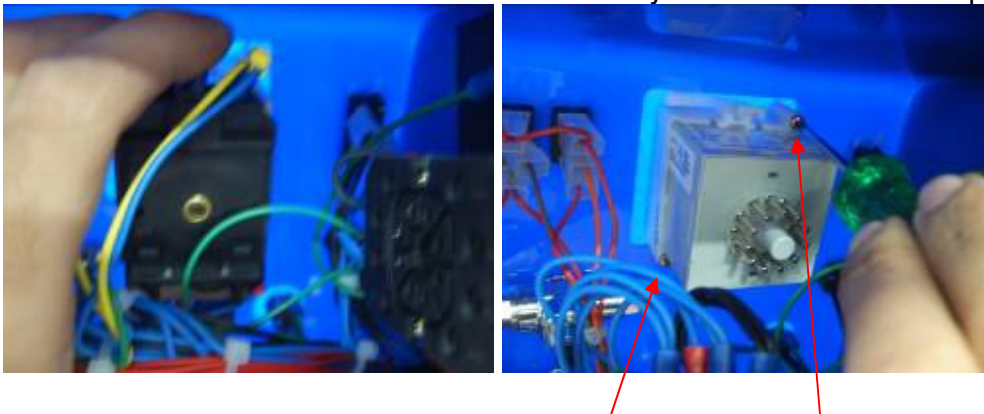
1- Open the machine. Unscrew the 4 screws of the back board.



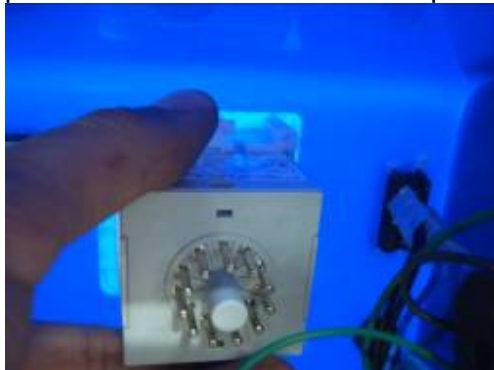
2- Remove the up relays. Using a screwdriver, remove the metal lock that holds the relay. After removing the lock, pull it out.



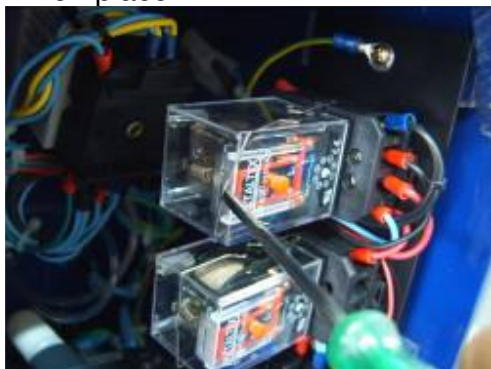
3- Remove the TIMER socket by pushing it out. To remove the TIMER clip, unscrew the two fixation screws indicated by the red arrows in the picture below.



4 – Tighten the clip and remove it. If necessary, use a pliers - careful not to damage the clip. Remove the TIMER by the front panel of the machine, then put the new one in place, then place the clip in it, then screw the two fixation screws and then put the TIMER socket back on place.



5 - After replacing the Timer, connect the “ice cube” relays and put the lock back on place.



6 - Close the machine.

