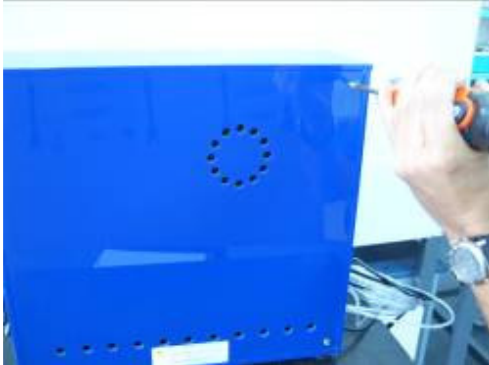
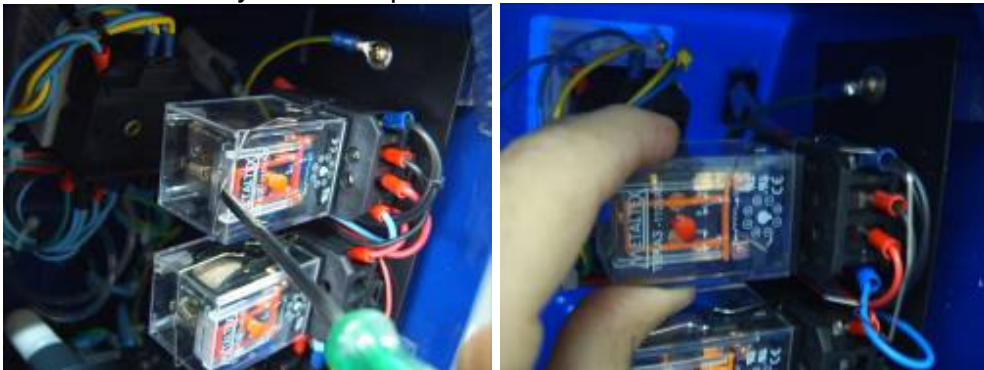


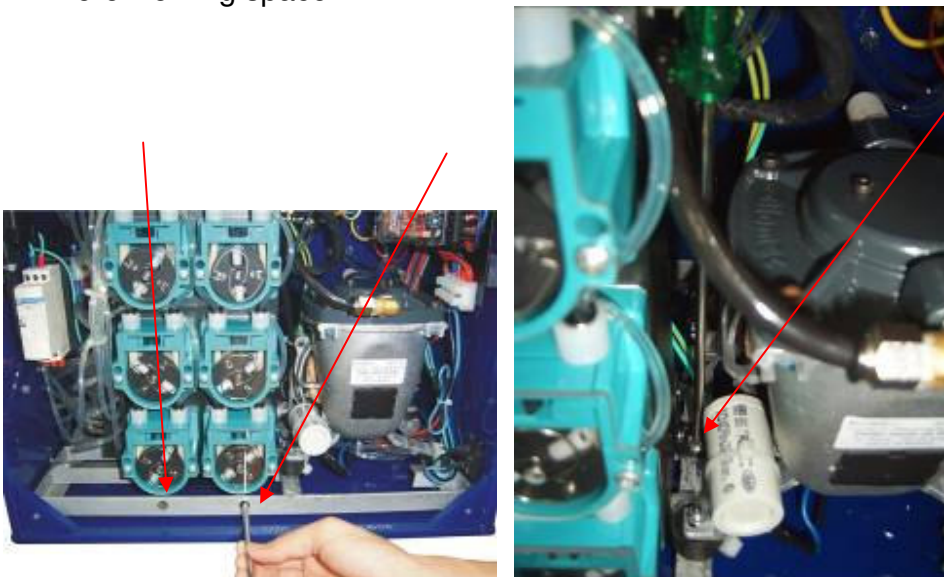
1- Open the machine. Unscrew the 4 screws of the back board.



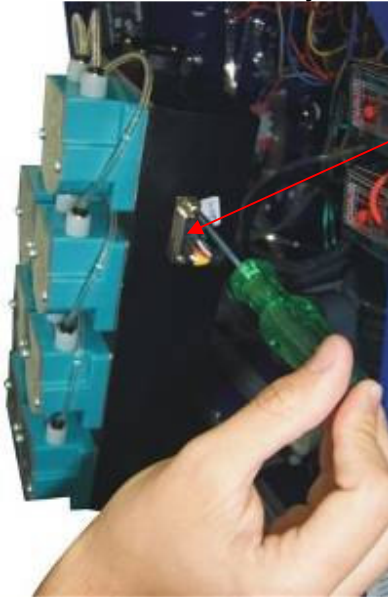
2- Remove the "Ice cube" relays. Using a screwdriver, remove the metal lock that holds the relay and then pull it out.



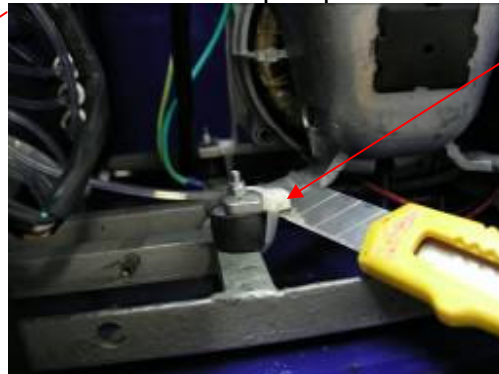
3- Place the set of pumps aside by removing the screws that fix it in order to make more working space.



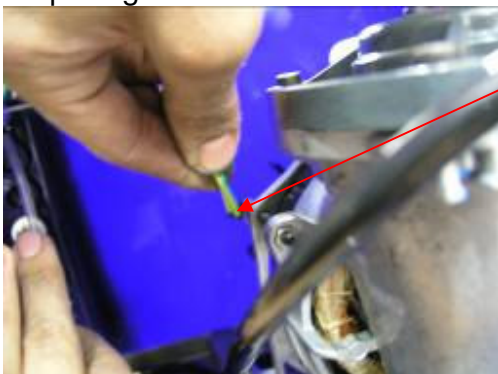
- 4- Once all fixation screws from the set of pumps have been removed, detach the connector from it by removing two screws.



- 5- Using a cutter, cut all plastic ties that fix the vacuum pump.



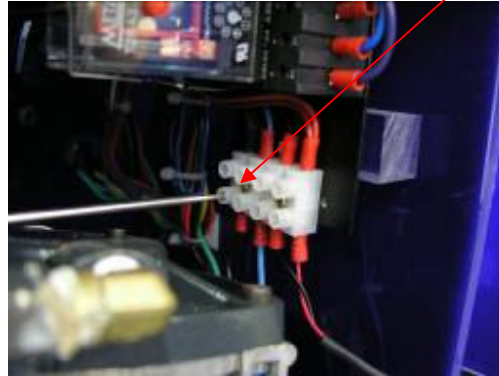
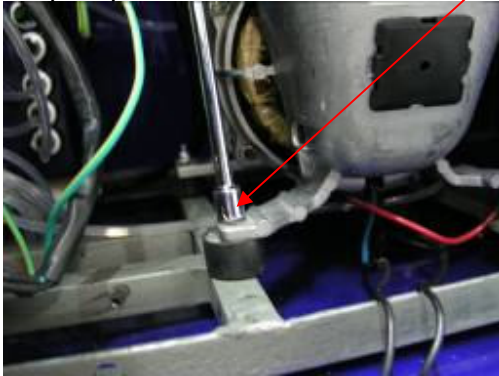
- 6- Cut the cable tie that fix the ground cable to the pump and remove it by carefully pulling it out.



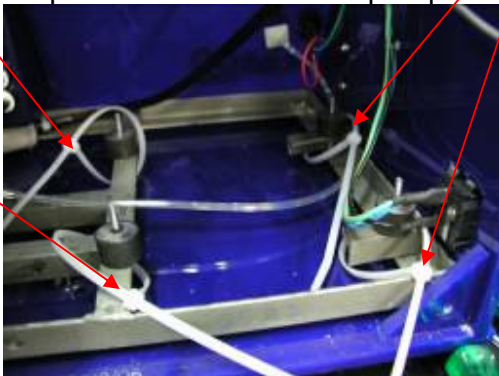
7- Detach the hose from the vacuum pump. To do that, press the small black ring from the pump's connector and pull the hose out.



8- Remove all nuts that fix the vacuum pump using the hexagonal nut driver and with a screwdriver, detach the cables of the pump. Then remove the vacuum pump.



9- Before placing the new one, fix all 4 plastic ties next to the rubber footings. Then place the new vacuum pump.



10- Then tighten all plastic ties. Cut the excess with the cutter. Careful not injury yourself.



To assemble the devices that were removed for maintenance, follow the steps in reverse.