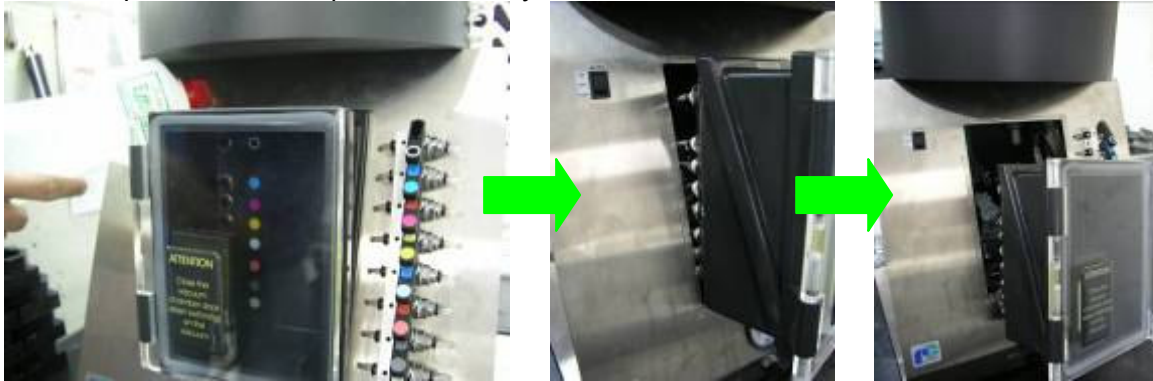
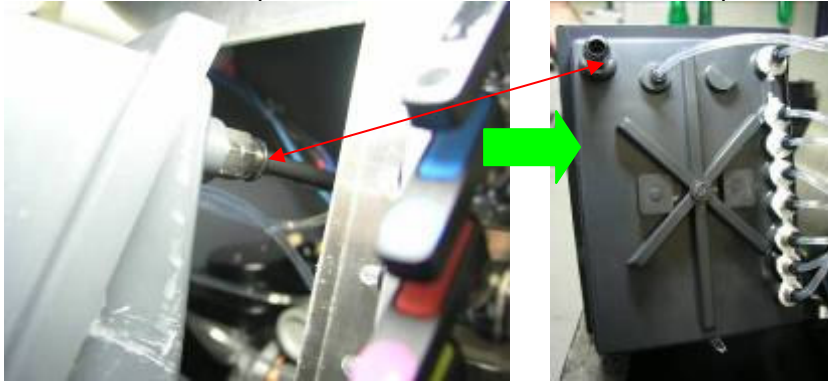


## Replacing the vacuum pump of microfill XXs machine

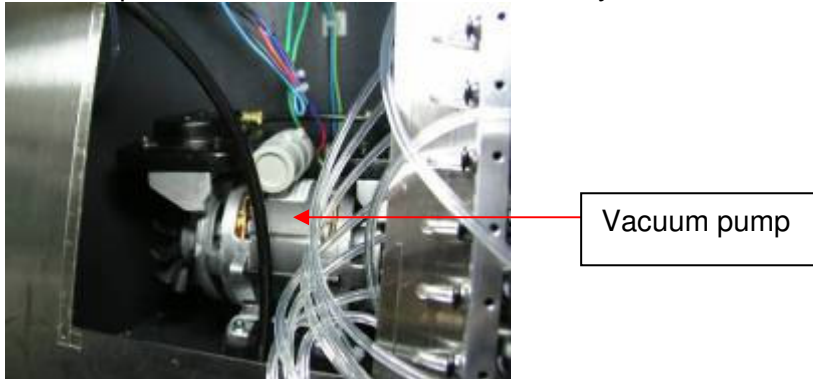
1. Remove the vacuum chamber. This is a difficult procedure so proceed with caution. With the help of another person, the vacuum chamber should be pulled out because it is fixed to the machine with a strong double sided tape. Throw alcohol at the vacuum chamber's surroundings to help loosen it then pull it out slowly.



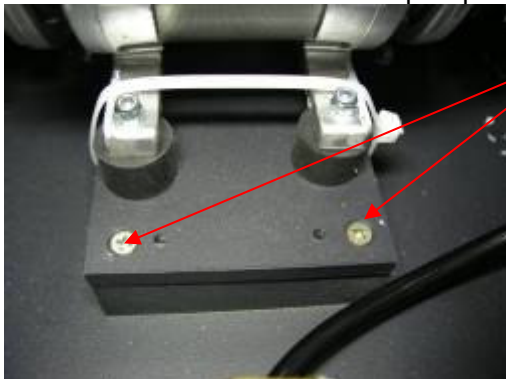
2. Once the vacuum chamber have been set loose, detach the vacuum hose from the vacuum chamber's fit in placed on its back, as shown in the picture below.



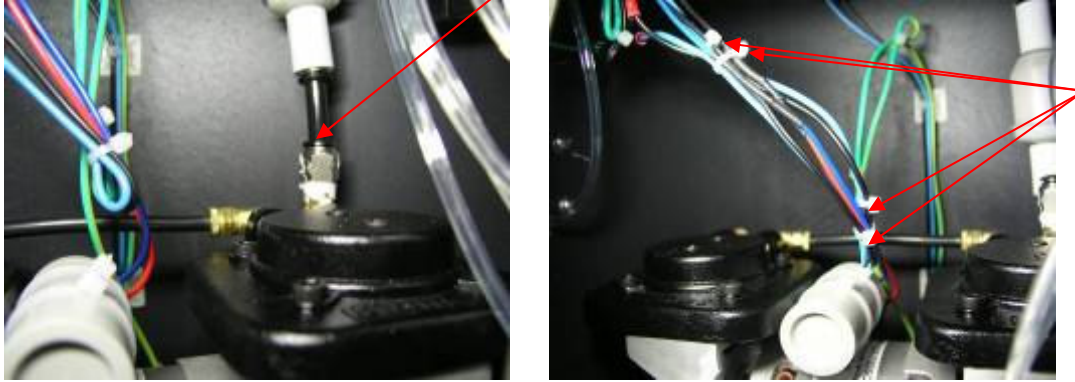
3. Now place the vacuum chamber aside so you can see the vacuum pump.



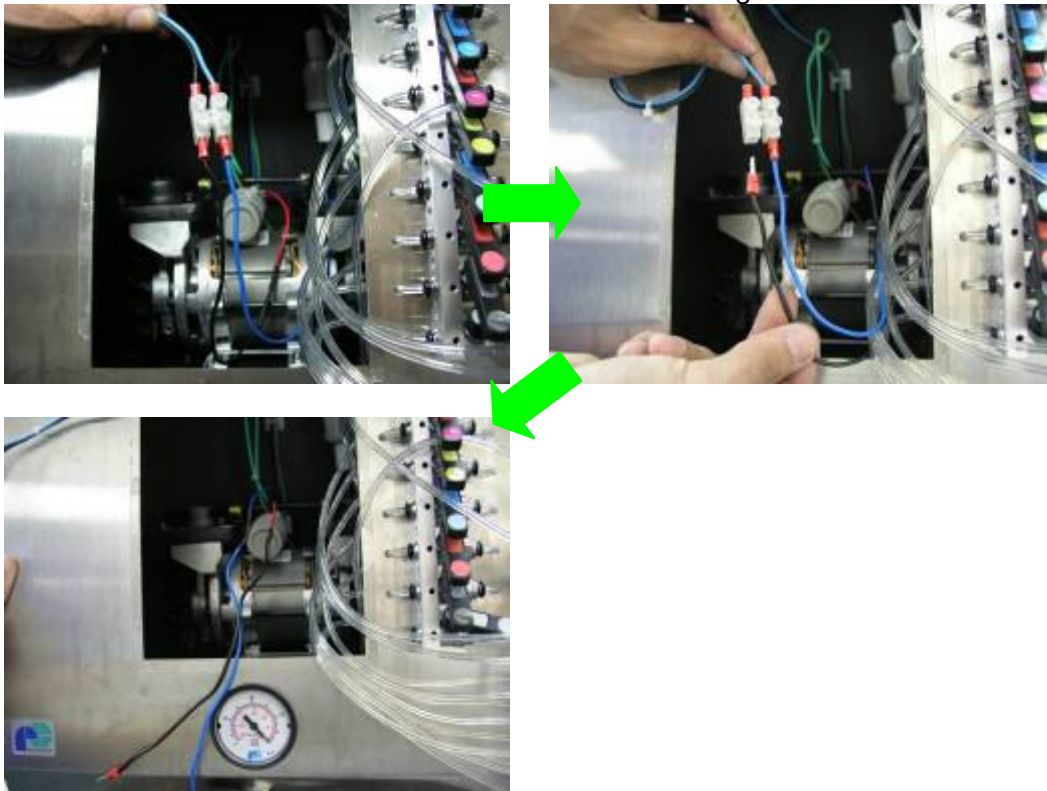
4. There is a black plate where the vacuum pump is fixed to inside the machine. Remove the two screws that fix the vacuum pump.



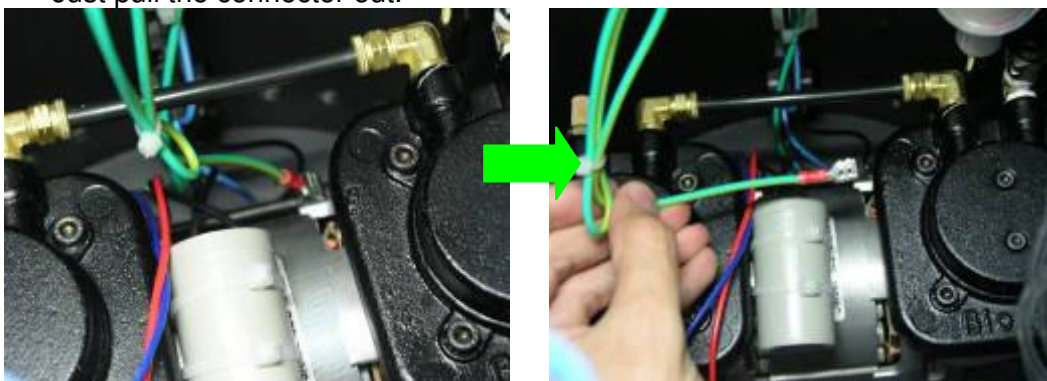
5. Now detach the vacuum hose from the vacuum pump by pushing the black ring of the fit in and pulling the hose out. Then locate the cables of the vacuum pump (**black and blue cables**) which are all grouped along with other cables by four cable ties. Cut those ties.



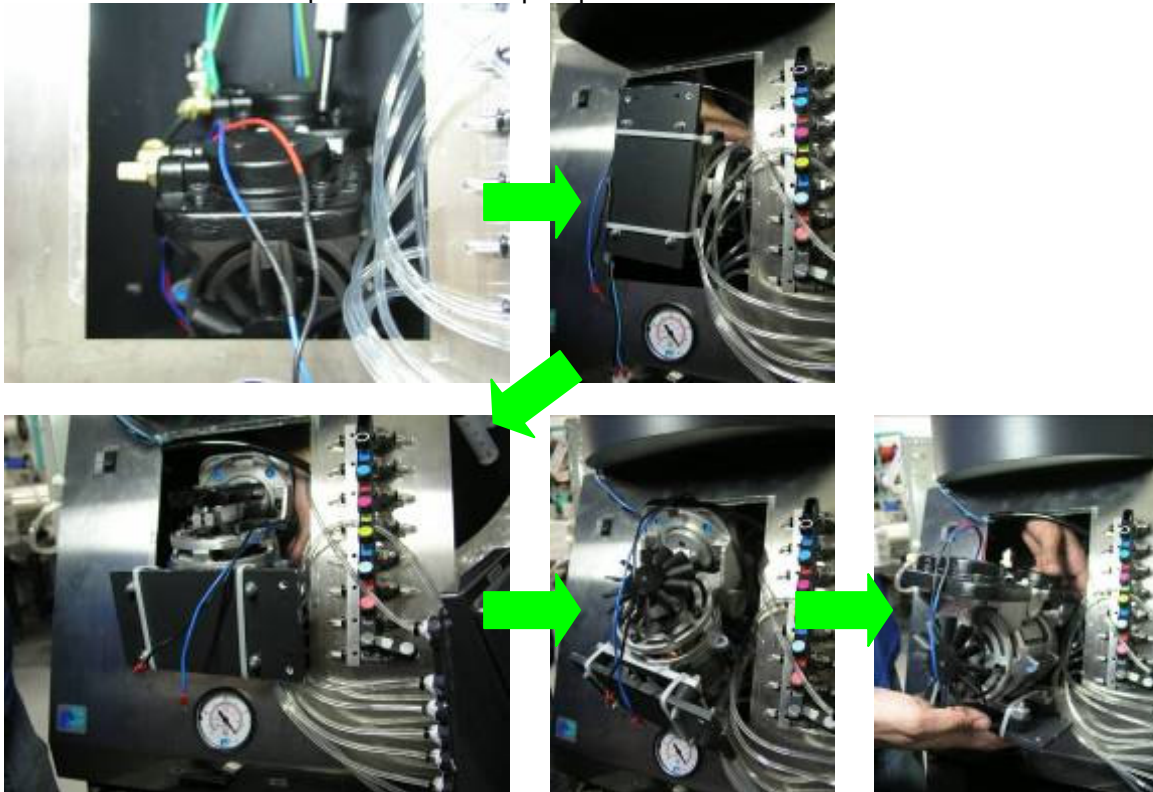
6. Separate the cables of the vacuum pump and then locate the white plastic connector where these cables are attached to. Then detach them using a small screwdriver.



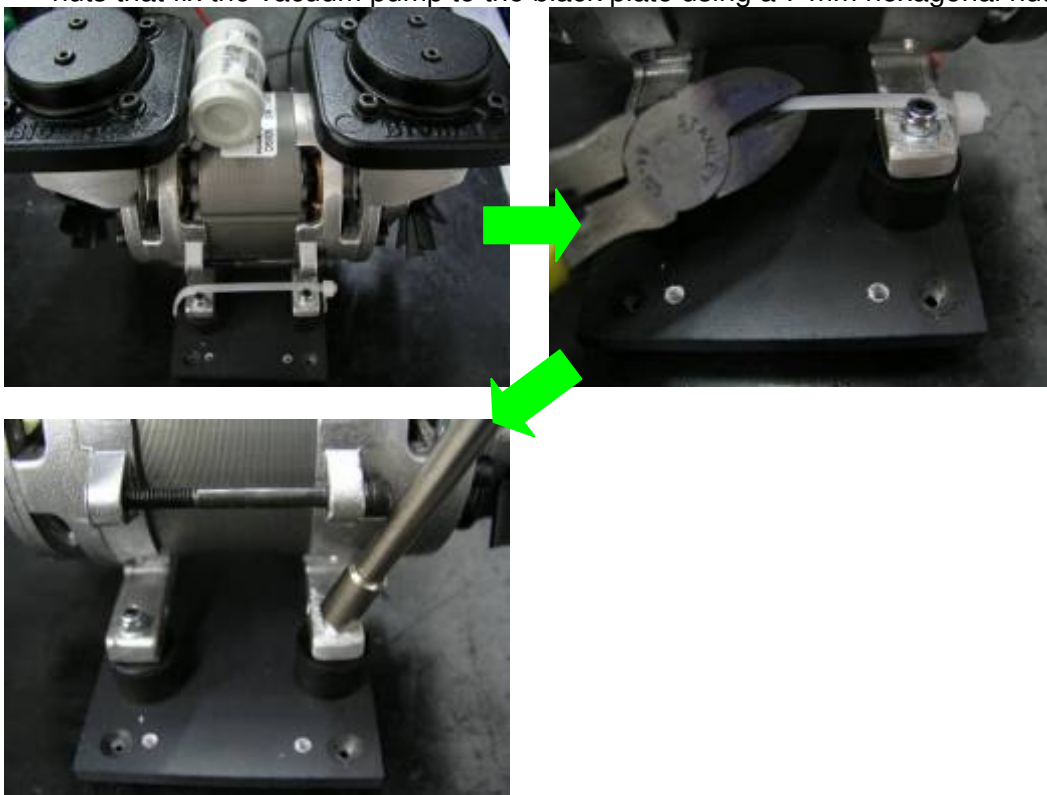
7. Locate the round cover located on the top of the machine and remove it slowly, taking care not to damage the cover or its painting.
8. Now locate the ground cable of the vacuum pump which is placed on its back. The picture below shows an upper view of the vacuum pump so you can see where the ground cable is. Just pull the connector out.



9. Now the vacuum pump is not connected nor attached to anything. In order to remove it from the machine's inside, rotate it anti-clockwise, lift it up as shown in the picture below, then rotate it clockwise and then pull the vacuum pump out.



10. Now that you removed the pump, cut the two cable ties with a cut pliers and then remove the nuts that fix the vacuum pump to the black plate using a 7 mm hexagonal nut driver.



**REMARK:** to assemble the new vacuum pump, follow the steps in reverse.