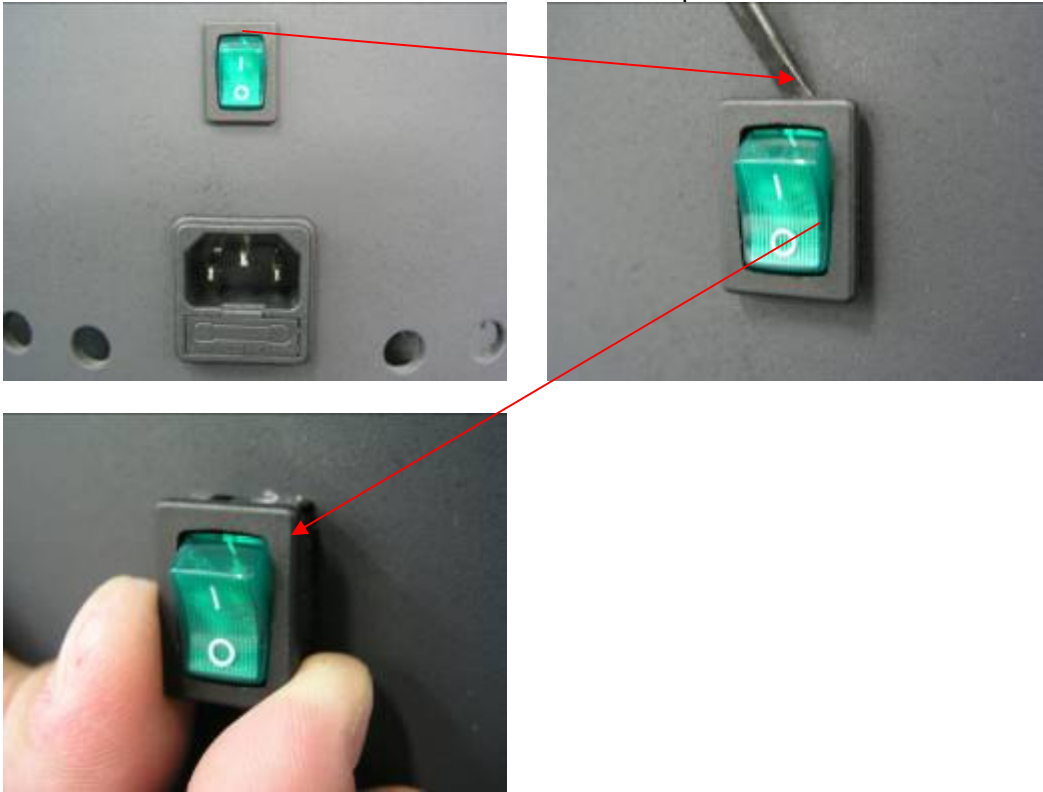
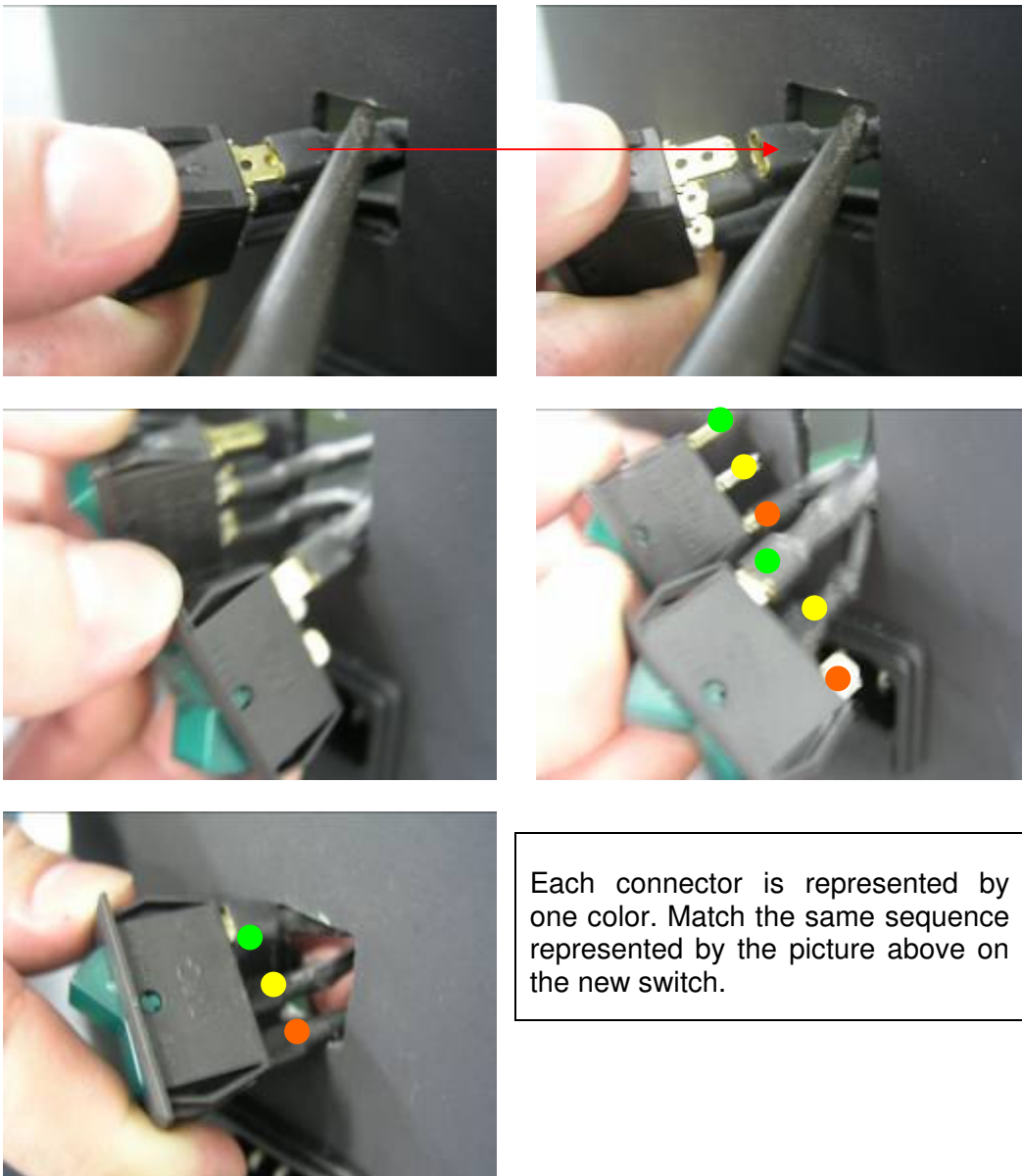


1. The ON / OFF switch is located at the back of the machine. Unplug the power cord from the socket of the machine and use a screwdriver as a lever to pull the switch out. Then remove it using your hands.



2. Use pliers to detach the cables from the switch. Detach one cable at a time and attach to the new switch.



Each connector is represented by one color. Match the same sequence represented by the picture above on the new switch.